

TOSHIBA

TPCLDrvSetup Operating Manual

2nd Edition March 2021

TABLE OF CONTENTS

Introduction	3
1. General Description	4
1.1 Features	4
1.2 Applicable printers	4
1.3 Notation	4
1.4 Screens Used in This Document	4
1.5 Trademark and Copyright	4
1.6 Operation Conditions	5
1.6.1 Operation System	5
1.6.2 Hardware	5
1.7 Cautions for Installation (IMPORTANT)	5
2 Preparation for Installation	6
2.1 List of the files needed to install	6
2.2 How to create a printer setting information file (*.sds)	7
2.3 How to edit the TPCLDrvSetup.xml	10
➤ LAN (RAW)	10
➤ LAN (LPR)	11
➤ USB	12
3 Installation Procedure	13
3.1 Printer Additional Procedure	13
4 Trouble Shooting	15
➤ When installation does not start even in USB is connected	15
5 Appendix	17
5.1 Model Lists	17
JP model	18
QM model	19

Introduction

This document gives you a general description of the installation, operation, and functions of the TPCLDrvSetup.exe.

The latest printer driver can be downloaded from TOSHIBA TEC bar code system website at the following URL:

URL Address : <http://www.toshibatec.co.jp/support/download/labelprinter/>

* TPCL: Abbreviation of TEC Printer Control Language

1. General Description

1.1 Features

This product is a printer driver designed for TOSHIBA bar code printer and used under Windows 8.1/ 10 /Server2019.

Enable the following works easily by using this application

- Additional printer installation
- Additional printer setting
- Import of paper and print setting
- Printer driver name change
- Preparing the standard TCP/IP printer port

1.2 Applicable printers

Barcode Printer:

Regarding the applicable printer, it depends on the TPCL Printer Drive Version.

Please refer the TPCL Printer Drive Manual.

1.3 Notation

- Names of menus, screens, icons, buttons, tabs, and items are enclosed in square brackets ([]). For example: Click the [OK] button.
- Wordings shown on the computer monitor and the LCD message display of your printer are enclosed in double quotation marks (" "). For example: "ON LINE".
- Titles of the chapters and sections to be referred to are expressed in bold and Italic. For example: Please refer to Section 1.1 Features.

1.4 Screens Used in This Document

Screens shown in this document are examples used for explaining operations. Unless otherwise specified, an operation system used in this document is Windows 10. Please note that the screens shown may differ depending on your usage environment and conditions.

1.5 Trademark and Copyright

Microsoft and Windows are trademarks of Microsoft Corporation in the United States and other countries. Other company and product names may be registered trademarks or trademarks of others. Each company's registered trademarks and trademarks are not marked with TM or ®. This document uses the following abbreviations.

- Microsoft® Windows® 8.1, Microsoft® Windows® 8.1 Enterprise, Microsoft® Windows® 8.1 Professional, Microsoft® Windows® 8.1 referred to as Windows 8.1.
- Microsoft® Windows® 10 Enterprise, Microsoft® Windows® 10 Professional, Microsoft® Windows® 10 IoT Enterprise, Microsoft® Windows® 10 referred to as Windows 10.
- Microsoft® Windows® Server 2019, Standard Edition, Microsoft® Windows® Server 2019, Datacenter Edition, Microsoft® Windows® Server 2019, Essentials Edition referred to as Windows Server 2019.

1.6 Operation Conditions

This product can be used under the following system requirement

1.6.1 Operation System

This product can be used with following OS and covered by Japanese and English.

Windows 8.1 (32bit / 64bit)

Windows 10 (32bit / 64bit)

Windows Server 2019

Microsoft .NET Framework 3.5 and above

1.6.2 Hardware

There are no particular requirements.

Please use the DOSV (IBM AT compatible) machine running the above Windows operation system.

1.7 Cautions for Installation (IMPORTANT)

Please be sure to read the following cautions before using this product.

- When you are going to install an upgraded version of the TEC printer driver, you must first uninstall the older version in advance. For how to uninstall the printer driver, refer to the Printer Driver Manual.

2 Preparation for Installation

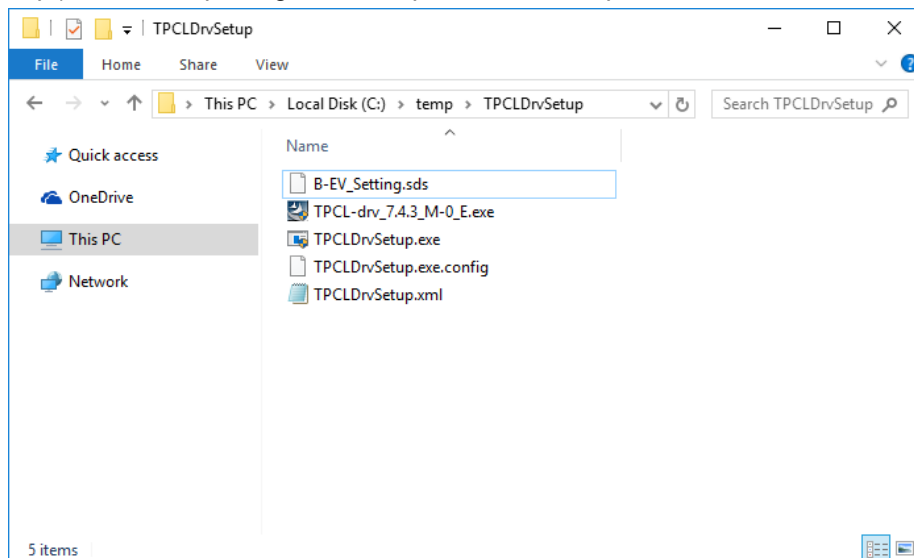
Installation procedure differs depending on the model of your printer and the connection method of the computer. Please install the printer drive according to the applicable procedure.

2.1 List of the files needed to install

Following 5 files are necessary for installation.

File name	Description
TPCLDrvSetup.exe	It is a application Main Unit Please start this execute file at the time of the setup
TPCLDrvSetup.exe.config	It is config file for NET Framework version redirection. This application is made in .NET Framework 3.5, but .NET Framework 3.5 does not become by default effective in the OS released after Windows 8. It becomes a definition file to operate application made in 3.5 in 4.x. .NET Framework is Config file of version direc. ※ Please do not change this contents.
TPCLDrvSetup.xml	It is definition file to specify a model and printer name to install. ※ An administrator needs to edit this file,
*.sds File	It is the configuration file which can be exported from the property of the printer driver. It is the file which saved paper information or print setting. ※ An administrator needs to create a configuration file.
TPCL-drv_x.x.x_M-x_E.exe or TPCLxxxMxJ.exe	It is an installer of the TPCL printer driver. It can be copy a constitution file of the printer driver in ¥TEC_DRV and register a information of driver package in the system. Please use a version V7.4.3M-0 or later.

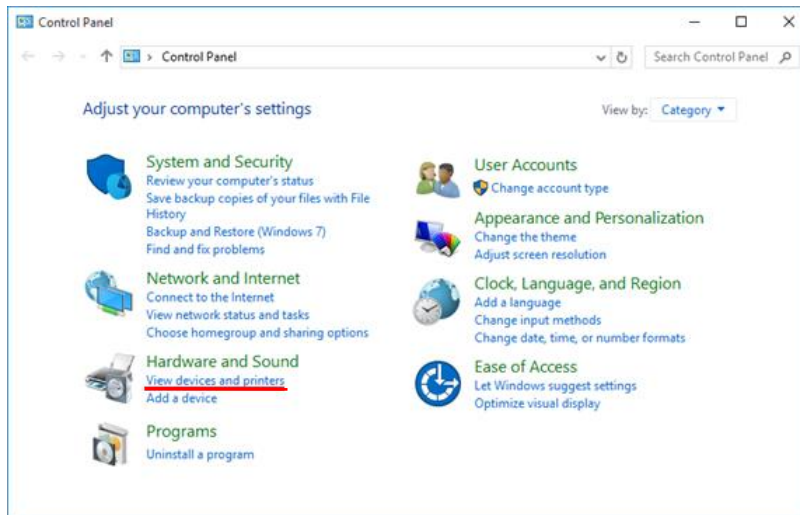
Exp.) C: When placing the ¥temp¥TPCLDrvSetup



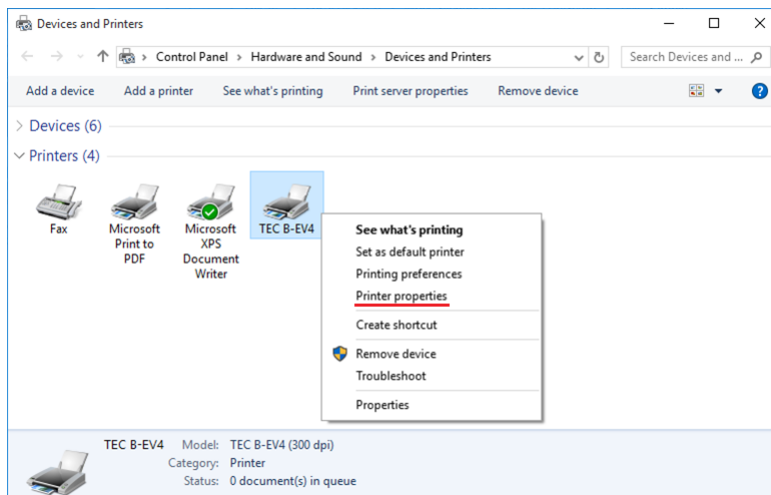
2.2 How to create a printer setting information file (*.sds)

* Please refer the TPCL Printer Drive Manual for add paper information and print setting change.

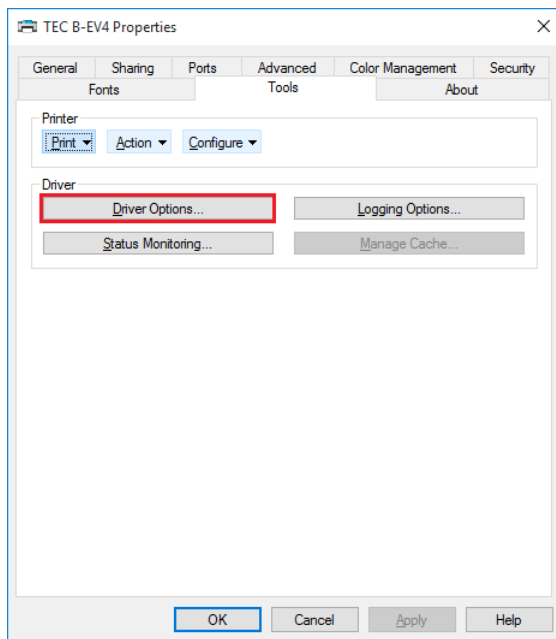
1. Click the [Control Panel] Select the [View device and Printer] and displayed [Devices and Printers] folder.



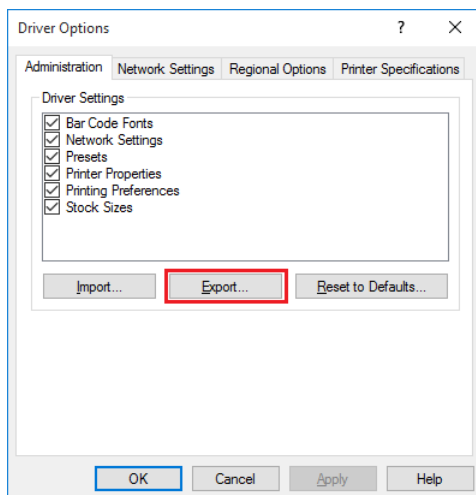
2. Select the printer icon [Devices and Printers] and Right-click the [Printer properties]



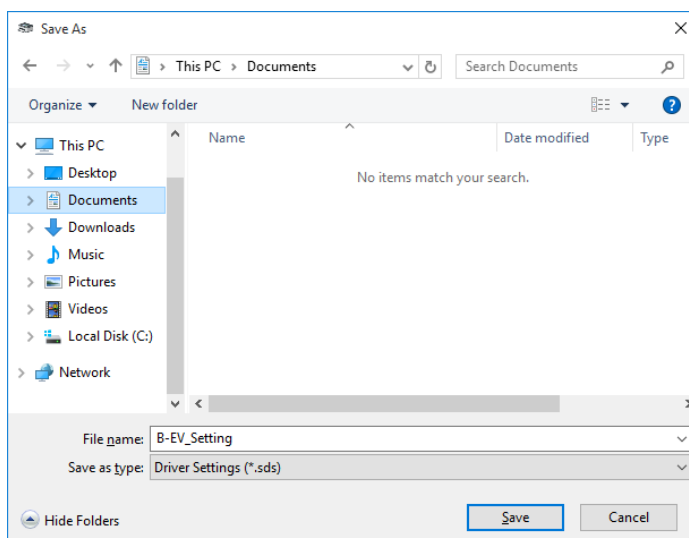
3. Select the [Tools] – open the [Driver Options]



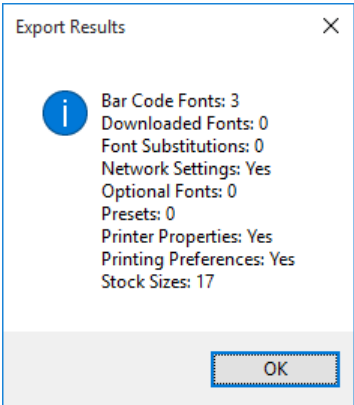
4. Enable the check box of the setting and click the [Export]



5. Select the [Save As] and click the [Save] as any name.



Click the [OK] button of the [Export Results] and close



2.3 How to edit the TPCLDrvSetup.xml

*Please use text editor and an XML editor for editing of the XML.

➤ LAN (RAW)

Explanation of each element and attribute

Element	Attribute	Description
TPCLDrvSetup	None	Root Element
Installer	Content	Specify the Installer file name
Printers	None	Tag for identification
Printer	Model	Specify the model name listed in a TOSHIBATEC.inf
	FriendlyName	Specify an arbitrary name
	SettingFile	Printer Driver [Property] - [Tools Tab] - [Drive Options] Specify the file name that exported
PrinterPort	(Content)	Fix the "LAN"
	Name	Specify the arbitrary name
	HostAddress	Specify the IP Address or Host name
	Protocol	Fix the "1"
	PortNumber	The Port Number that is set to a printer

【Definition Sample】

- Printer driver version to install : V7.4.3M-0
- Printer Name : TOSHIBA B-EX4T1 (203 dpi)
- Printer friendly name : TOSHIBA B-EX4T1 (203 dpi)
- Driver setting name(*.sds) : B-EX_Setting.sds
- Port : LAN(Raw)
 - Port name : 192.168.10.20
 - IP address : 192.168.10.20
 - Port number : 9100

XMLDescription Contents

```
<TPCLDrvSetup>
  <Installer>TPCL-drv_7.4.3_M-0_E.exe</Installer>
  <Printers>
    <Printer Model="TOSHIBA B-EX4T1 (203 dpi)" FriendlyName="TOSHIBA B-EX4T1 (203 dpi)" SettingFile="B-EX_Setting.sds">
      <PrinterPort Name="192.168.10.20" HostAddress="192.168.10.20" Protocol="1" PortNumber="9100">LAN</PrinterPort>
    </Printer>
  </Printers>
</TPCLDrvSetup>
```

➤ LAN (LPR)

Explanation of each element and attribute

Element	Attribute	Description
TPCLDrvSetup	None	Root Element
Installer	(Content)	Specify the Installer file name
Printers	None	Tag for identification。
Printer	Model	Specify the model name listd in a TOSHIBATEC.inf
	FriendlyName	Specify an arbitrary name
	SettingFile	Printer Driver [Property] - [Tools Tab] - [Drive Options] Specify the file name that exported
PrinterPort	(Content)	Fix the “LAN”
	Name	Specify an arbitrary name
	HostAddress	Specify the IP address or Host name
	Protocol	Fix the “2”
	Queue	Specify the queue name
	ByteCount	LPR Byte Counting Enabled Enable: true Disable: false

【Definition Sample】

- Printer driver version to install : V7.4.3M-0
- Printer Model : TOSHIBA B-EX4T1 (203 dpi)
- Printer friendly name : TOSHIBA B-EX4T1 (203 dpi)
- Driver setting name(*.sds) : B-EX_Setting.sds
- Port : LAN(LPR)
 - Port Name : 192.168.10.20
 - IP address : 192.168.10.20
 - Queue name : lp
 - LPR Byte Counting Enabled : None

XML

```

<TPCLDrvSetup>
  <Installer>TPCL-drv_7.4.3_M-0_E.exe</Installer>
  <Printers>
    <Printer Model="TOSHIBA B-EX4T1 (203 dpi)" FriendlyName="TOSHIBA B-EX4T1 (203 dpi)" SettingFile="B-EX_Setting.sds">
      <PrinterPort Name="192.168.10.20" HostAddress="192.168.10.20" Protocol="2" Queue="lp" ByteCount="false">LAN</PrinterPort>
    </Printer>
  </Printers>
</TPCLDrvSetup>

```

➤ USB

Explanation of each element and attribute

Element	Attribute	Description
TPCLDrvSetup	None	Root Element
Installer	(Content)	Specify the installer file name
Printers	None	Tag for identification
Printer	Model	Specify the model name listed in a TOSHIBATEC.inf
	FriendlyName	Specify the any name
	SettingFile	Printer Driver [Property] - [Tools Tab] - [Drive Options] Specify the file name that exported
PrinterPort	(Content)	Fix the "USB"

【Definition Sample】

- Printer driver version to install : V7.4.3M-0
- Printer Model : TOSHIBA B-EX4T1 (203 dpi)
- Printer friendly name : TOSHIBA B-EX4T1 (203 dpi)
- Driver setting name(*.sds) : B-EX_Setting.sds
- Port : USB

```

<TPCLDrvSetup>
  <Installer>TPCL-drv_7.4.3_M-0_E.exe</Installer>
</Printers>
<Printer Model="TOSHIBA B-EX4T1 (203 dpi)" FriendlyName="TOSHIBA B-EX4T1 (203 dpi)" SettingFile="B-EX_Setting.sds">
  <PrinterPort>USB</PrinterPort>
</Printer>
</Printers>
</TPCLDrvSetup>

```

3 Installation Procedure

Explain an installation procedure using TPCLDrvSetup.exe.

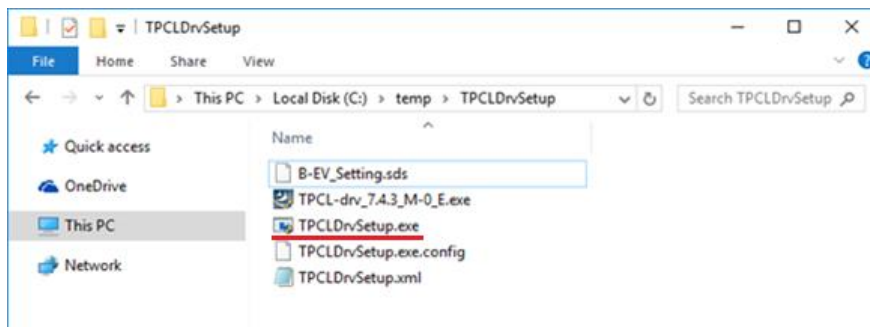
Note: Please refer the [Trouble Shooting] in case if it does not install as a procedure.

3.1 Printer Additional Procedure

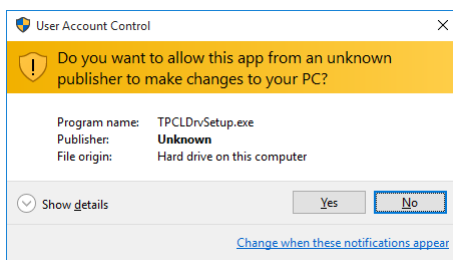
Restrictions on installing USB with plug and play

- The printer which makes USB connection with PC must be one printer
- Do not connect the PC and printer before application starting

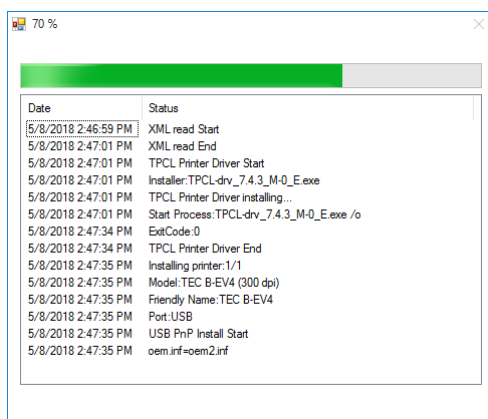
1. Please Select the TPCLDrvSetup.exe



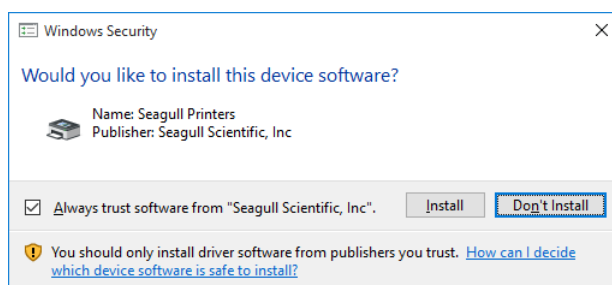
2. When a confirmation screen of the user account control is displayed, please click "Yes"



3. A screen is displayed. During execution, multiple screens may be displayed to start external applications in order.

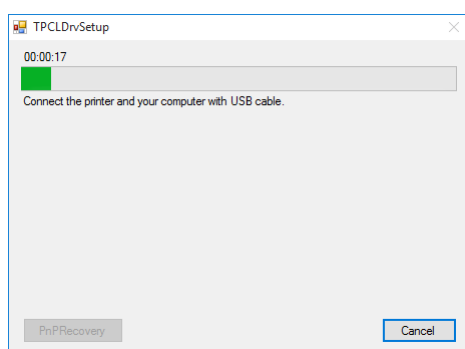


4. When the following screen appears, please click “install”



5. 【For USB only】

When the following screen appears, please connect the printer to PC by USB and turn on the power of the printer



※Processing starts when it connect the printer to PC by USB.
Continue to display the dialogue unless you connect.

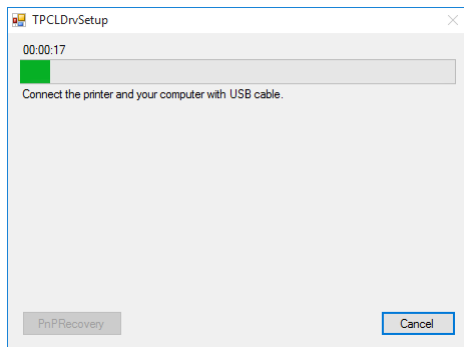
6. If all dialogues are closed, it has been completed.

4 Trouble Shooting

Function setting of this product are done by the “property” of the printer icon or “print setting”.

➤ When installation does not start even in USB is connected

Installation does not proceed with screen shown below in spite of the printer is connected.



- The possible causes are as follows.

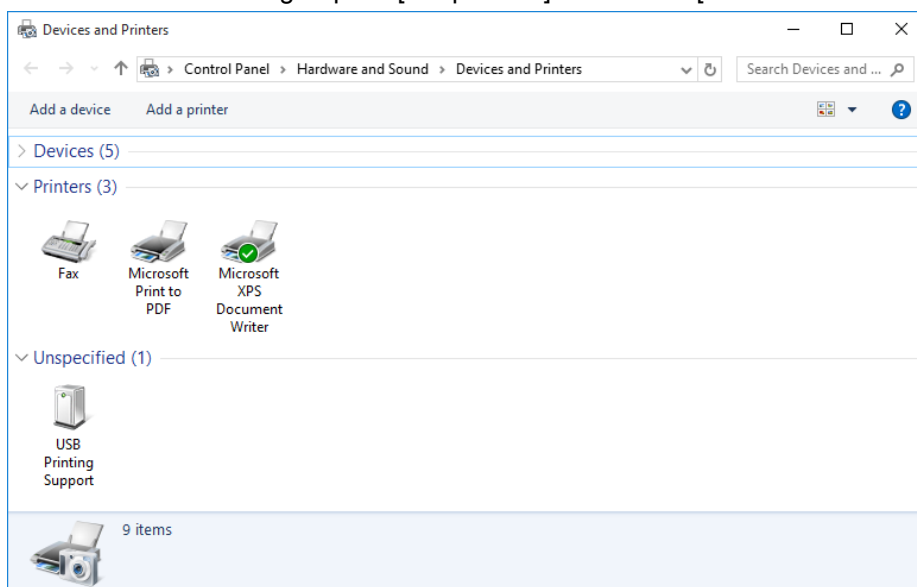
- The installation applicable model listed in the TPCLDrvSetup.xml does not match the actual connected printer.

【Measures】

- ✧ Please refer to the “5.1 List of Model” in this manual appendix and double check the model name and revised it if necessary.
- Printer is not turned on

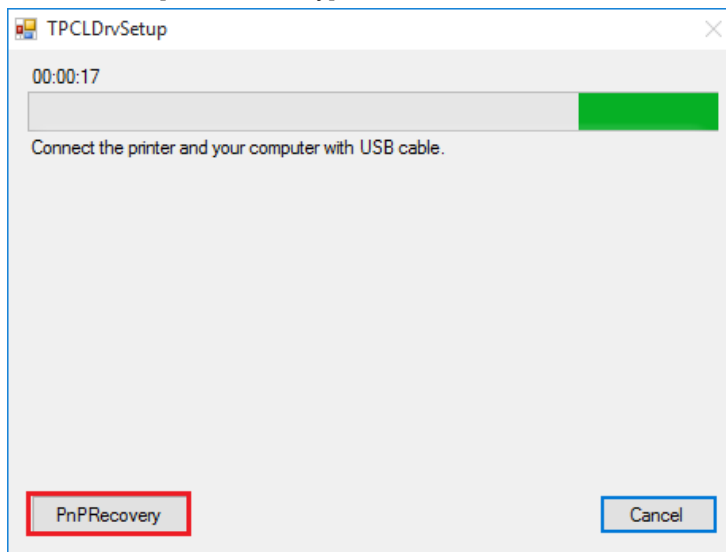
【Measures】

- ✧ Please confirm that USB is connected and turn on the printer
- An icon is shown as group of [Unspecified] under the [Devices and Printers]

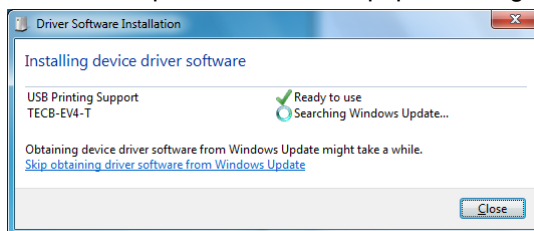


【Measures】

- ✧ Click the [PnPRecovery] button at lower left of screen if it is effective.



- ✧ When [PnPRecovery] button is getting out of the gray, the OS may search a driver from Windows Update. Please skip processing when you search Windows Update as follows.



5 Appppendix

5.1 Model Lists

This manual creates based by TPCL printer driver V7.4.3M-0.

Pleae refer the model list in TOSHIBATEC.inf which is under C¥TEC_DRV folder in cace if you ca
n not find the appricable model after PC set up with most recent version of printer driver.

JP model

List of model name for Domestic
TEC B-374
TEC B-419G
TEC B-433
TEC B-433-CSG
TEC B-433T
TEC B-458
TEC B-458-R
TEC B-458H
TEC B-474
TEC B-484
TEC B-858
TEC B-858-R
TEC B-874
TEC B-EP2DL-G-JP
TEC B-EP4DL-T-JP
TEC B-EV4-G
TEC B-EV4-T
TEC B-EX4T1-G
TEC B-EX4T1-T
TEC B-EX4T3-H
TEC B-EX6T1-G
TEC B-EX6T1-T
TEC B-LP2D-G
TEC B-LV4-G
TEC B-LV4-T
TEC B-SA4G-JP
TEC B-SA4T-JP
TEC B-SK10D-JP
TEC B-SP2D-JP
TEC B-SV4-JP
TEC B-SX5-JP
TEC B-SX8R-JP
TEC B-SX8T-JP-R
TEC CB-418-T3
TEC CB-418-T3 (FINE MODE)
TEC KP-20

QM model

List of model name for Overseas
TEC B-452-R
TEC B-462-R
TEC B-852-R
TEC B-EP2DL-G
TEC B-EP4DL-G
TEC B-EV4 (203 dpi)
TEC B-EV4 (300 dpi)
TEC B-SA4T (203 dpi)
TEC B-SA4T (300 dpi)
TEC B-SA4T-CN (203 dpi)
TEC B-SA4T-CN (300 dpi)
TEC B-SV4
TEC B-SX4T (203 dpi)
TEC B-SX4T-CN (203 dpi)
TEC B-SX5T (305 dpi)
TEC B-SX5T-CN (305 dpi)
TEC B-SX6T (305 dpi)
TEC B-SX8T (305 dpi)
TOSHIBA B-EX4T1 (203 dpi)
TOSHIBA B-EX4T1 (305 dpi)
TOSHIBA B-EX4T2 (203 dpi)
TOSHIBA B-EX4T2 (300 dpi)
TOSHIBA B-EX4T2 (600 dpi)
TOSHIBA B-EX4T3 (600 dpi)
TOSHIBA B-EX6T1 (203 dpi)
TOSHIBA B-EX6T1 (305 dpi)
TOSHIBA B-EX6T3 (203 dpi)
TOSHIBA B-EX6T3 (305 dpi)
TOSHIBA B-FP3D (203 dpi)
TOSHIBA B-FV4 (203 dpi)
TOSHIBA B-FV4 (300 dpi)
TOSHIBA DB-EA4D

2nd Edition issued: March 2021

TOSHIBA TEC CORPORATION

1-11-1, Osaki, Shinagawa-ku, Tokyo 141-8562
Gate City Ohsaki West Tower

©TOSHIBA TEC CORPORATION 2021

All rights reserved.